



30 Albury Close

, Lordswood, ME5 8UW

Offers Around £350,000



VIRTUAL TOUR AVAILABLE. DOUBLE BEDROOMS. PARKING. SOUGHT AFTER LOCATION.

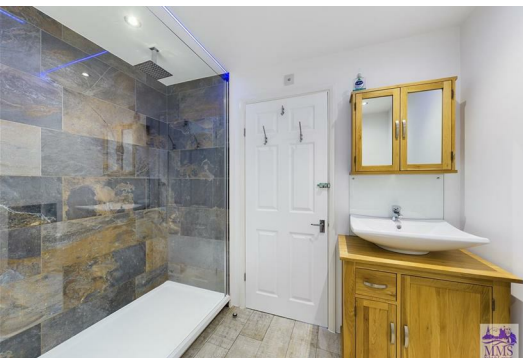
Ideally located for easy walking access to the local shops and entertainment is this 3 bedroom tastefully extended semi detached property in the village of Lordswood. With so much to offer in this property, we highly recommend you book your internal viewing today!!

Upon entry via the handy porch you will find a good size lounge running from front to rear. The lovely kitchen is well equipped with ample cupboard space and room for essential appliances. The property has been cleverly extended to create a dining room over looking the rear garden and offering access to the garage. The extension is double story which has created the huge benefit of three DOUBLE BEDROOMS! There is also a family bathroom and a stunning en-suite to the master with a triple size shower!!

Outside the rear garden is mainly lawn with lovely woodland to the rear, giving that very private feel. To the front there is a block paved drive for three cars

This property has been very well maintained by the current vendor and we believe this would make the ideal family home.

Council tax band C



- porch
- lounge
- kitchen
- dining room
- garage
- stairs/landing
- bedroom 1
- ensuite
- bedroom 2
- bedroom 3
- bathroom
- garden
- drive

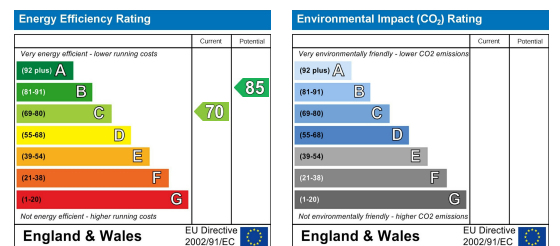
Area Map



Floor Plans



Energy Efficiency Graph



These particulars, whilst believed to be accurate are set out as a general outline only for guidance and do not constitute any part of an offer or contract. Intending purchasers should not rely on them as statements of representation of fact, but must satisfy themselves by inspection or otherwise as to their accuracy. No person in this firm's employment has the authority to make or give any representation or warranty in respect of the property.